



# THE CURIOUS CASE OF The **MAGICAL** BOTTLE

## A HALLOWEEN MYSTERY AT HOME

On display at Preston Park Museum is a curious and elegant green glass bottle. Folklore would have it that the bottle was placed in Stockton Town Hall by witches to protect the borough of Stockton. This ornate bottle has been protecting the borough for centuries, until now...

Ever since the bottle's disappearance, mysterious things have been happening! Complete the tasks ahead of you to help return the bottle to its rightful place before midnight on Halloween!



Six bottles, (including this one!) are hiding in plain sight...each contains one letter of a summoning word...can you figure it out?



Stockton-on-Tees  
BOROUGH COUNCIL

[prestonparkmuseum.co.uk/halloween](http://prestonparkmuseum.co.uk/halloween)



Preston Park  
Museum & Grounds

# THERE APPEARED A MISTY MAZE IN PRESTON PARK

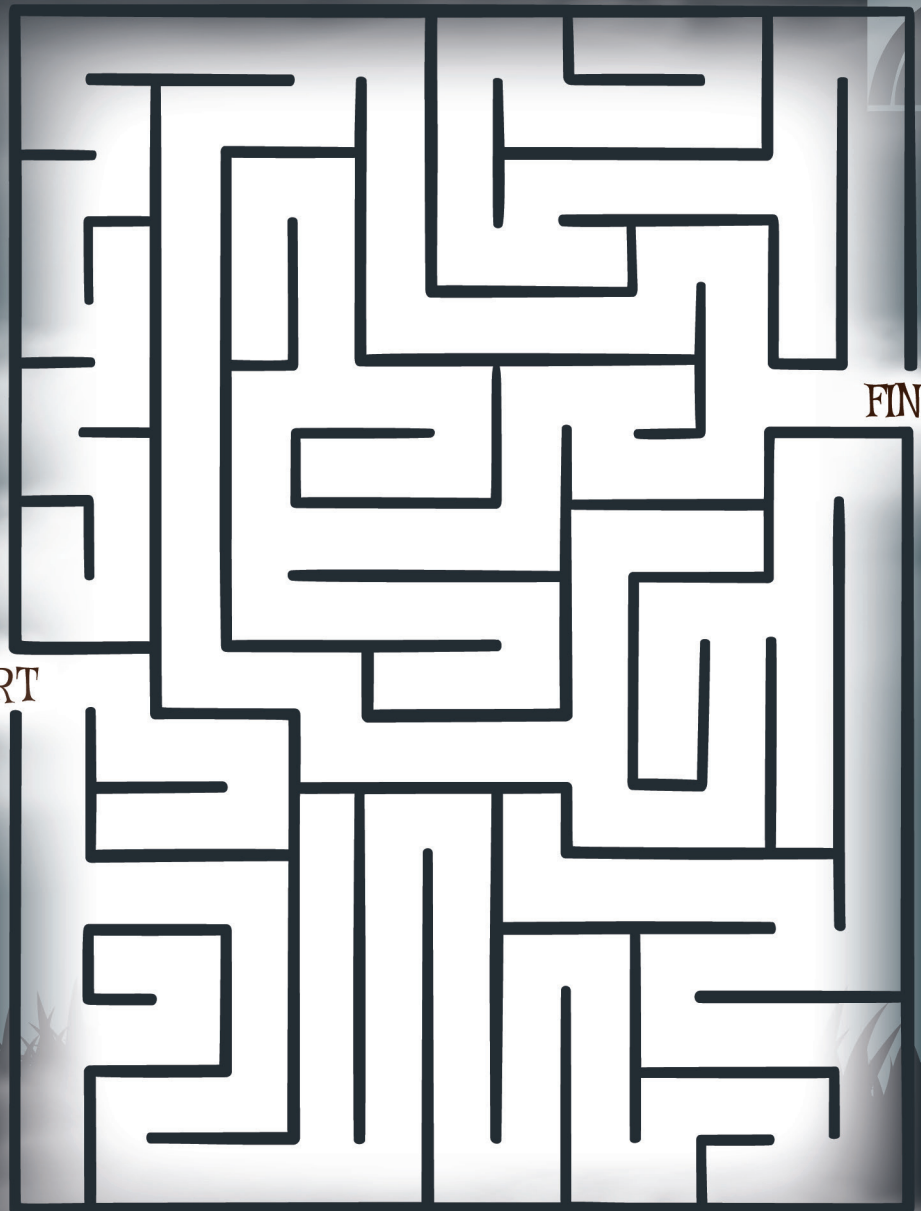


## Mist-erious...

A strange mist covers the grounds of Preston Park Museum, and within it, appears a misty maze. Luckily, an enchanted squirrel is here to help you through! Follow his voice through to the other side of the misty maze...

→ START

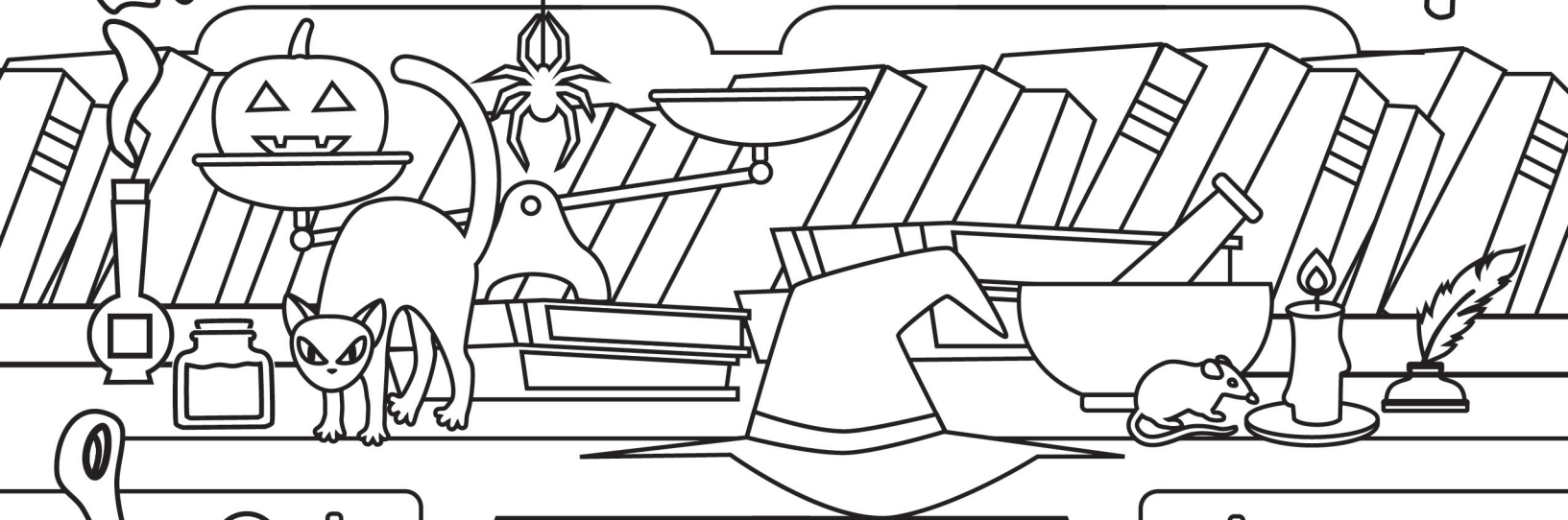
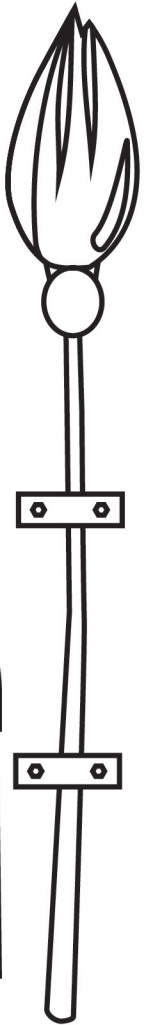
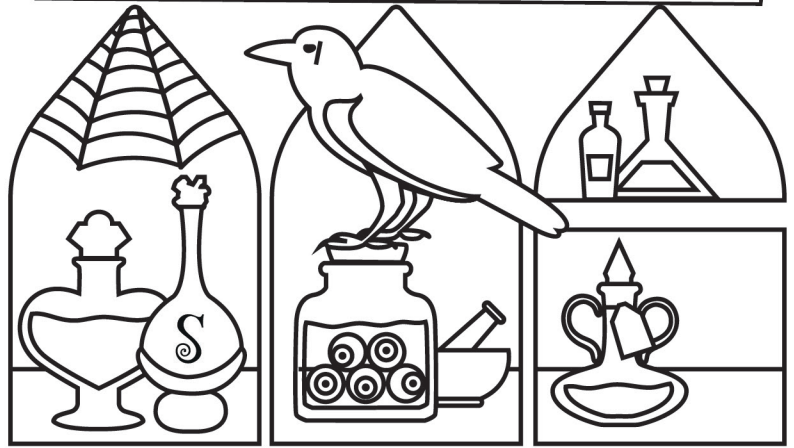
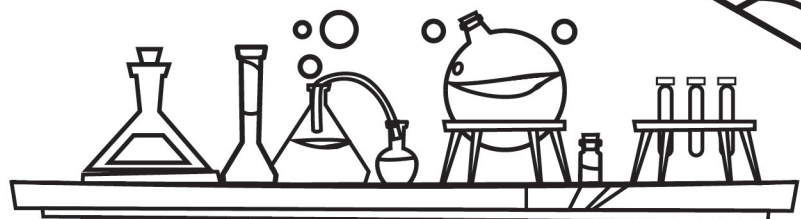
FINISH →







# PETRA'S POTION PANTRY



A spilt potion has  
drained the colour  
from Petra's Pantry!



# WICKED WORDSEARCH

## BUBBLE TROUBLE...

Wicked Wanda has lost the recipe for her potion!

Each ingredient is listed in the bubbles rising from her cauldron...help Wanda find them in the wordsearch below!



PATCHOULI

TOADSTOOL

OWL  
TEARS

FROGSPAWN

SPIDER  
LEGS

ALGAE

CROW  
FEATHER

BEETLE  
WINGS

BAT  
BONES

COBWEB

EYE OF  
NEWT

THYME

KNOTWEED

WEREWOLF  
FUR

S	G	E	L	R	E	D	I	P	S	E	L	S	Y
O	E	M	E	W	I	W	A	G	E	Y	S	E	W
W	N	E	T	T	L	E	S	R	N	I	G	K	E
L	F	T	O	A	D	S	T	O	O	L	N	N	R
T	R	B	A	L	G	A	E	W	B	U	I	O	E
E	O	D	E	O	S	W	S	F	T	O	W	T	W
A	G	E	N	W	O	E	E	E	A	H	E	W	O
R	S	E	L	U	B	O	E	A	B	G	L	E	L
S	P	G	P	C	D	O	T	T	R	T	T	E	F
T	A	W	U	E	A	R	G	H	E	A	E	D	F
W	W	T	T	T	H	Y	M	E	A	P	E	F	U
O	N	H	C	S	P	E	E	R	O	E	B	E	R
T	L	O	M	E	Y	E	O	F	N	E	W	T	T
G	L	W	F	G	A	O	A	O	I	R	T	W	A

**HINT:** some words run backwards AND diagonally!



# A SPELL FOR STOCKTON

## Hocus Pocus!

Selene the Spellcaster has gifted you with a magic page from her spellbook! Write a spell for Stockton - it can be a rhyme or a chant, a wish or a welcome... even a drawing!



## ENTER TO WIN!

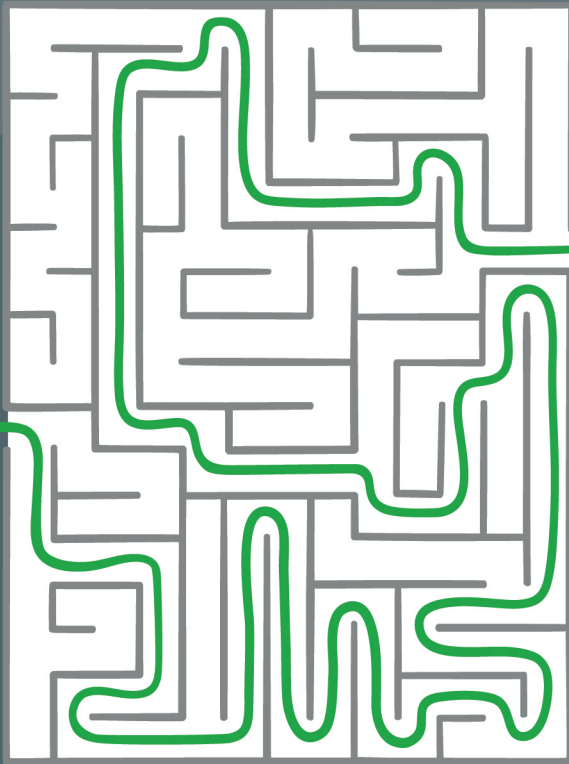
Richard Drake of Drake The Bookshop is delighted to judge and select the winning entry. The person with the winning 'Spell for Stockton' will receive a special voucher to spend in store.

**For your chance to win,  
send your entry to:**

**[events@stockton.gov.uk](mailto:events@stockton.gov.uk)**



# SOLUTIONS



THERE APPEARED A  
MISTY  
MAZE  
IN PRESTON PARK



DID YOU FIND ALL  
THE BOTTLES?

SOLUTION: STLEsS

WICKED  
WORDSEARCH



S	G	E	L	R	E	B	I	P	S	E	L	S	Y
O	E	M	E	W	I	W	A	G	E	Y	S	E	W
W	N	E	T	T	L	E	S	R	N	G	K	E	
L	F	T	O	A	D	S	T	O	O	L	N	N	R
T	R	B	A	L	G	A	E	W	B	U	O	E	
E	O	D	E	O	S	W	S	F	T	O	W	T	W
A	C	E	N	H	O	E	E	E	A	H	E	W	O
R	S	E	L	U	B	O	E	A	B	C	L	E	L
S	P	G	P	C	D	O	T	T	R	T	T	E	F
T	A	W	U	E	A	R	C	H	E	A	E	D	F
W	W	T	T	T	H	Y	M	E	A	P	E	F	U
O	N	H	C	S	P	E	E	R	O	E	B	E	R
T	L	O	M	E	Y	E	O	F	N	E	W	T	T
G	L	W	F	G	A	O	A	O	I	R	T	W	A